



ISO 9002 Certified

Lead with technology

Win customers with service

JB-1300 Serial Model iButton Key Reader

OPERATION MANUAL

© Jarltech International Inc. 2002. All rights reserved.

===== Announcement =====

ibutton has been registered by Dallas and its related copartner.

Under the copyright laws, this manual may not be copied, in whole or in part, without the written consent of Jarltech.

Every effort has been made to ensure that the information in this manual is accurate. Jarltech is not responsible for printing or clerical errors.

Jarltech International Inc.
3F, No. 1, Lane 538, Chung Cheng Road, Hsin Tien, Taipei,
Taiwan, R.O.C.

This equipment has been tested and found to comply with the limits for Class A digital device. Pursuant to Part 15 of the FCC Rules. These limits are designed to provide reasonable protection against harmful interference in a residential installation. This equipment generates, uses, and if not installed and used in accordance with the instructions may cause harmful interference will not occur in a particular installation. If this equipment does cause harmful interference to radio or television reception, which can be determined by turning the equipment off and on. The user is encouraged to try correct interference by one or more of the following measures:

- Reorient or relocate the receiving antenna.
- Increase the separation between the equipment and receiver.
- Connect the equipment into an outlet on a circuit different from that to which the receiver is connected.
- Consult the dealer or an experienced radio/TV technician for help. This booklet is available from the U.S. government Printing Office, Washington, DC 20402, Stock NO. 004-000-00345-4.

CAUTION: Any changes of modifications not expressly approved by the grantee of this device could void the user's authority to operate the equipment.

Operation is subject to the following two conditions:

- (1) This device may not cause harmful interference.
- (2) This device must accept any interference received including interference that may cause undesired operation.

Contents

Chapter 1. Introduction_____ **Page 5-5**

Chapter 2. Specification_____ **Page 6-7**

Chapter 3. Utility_____ **Page 8-12**

Appendix I: Packing List_____ **Page 13**

1 Introduction

.....

Jarltech JB-1300 ibutton key reader is a smart device specially designed to be used with Dallas ibutton keys.

Customer may use JB-1300 to read ID and data from a ibutton key by touching action. Once the key touches the gutter of reader, then key data will through keyboard or RS232 mode outputing to receiver such as Personal Computer...etc.

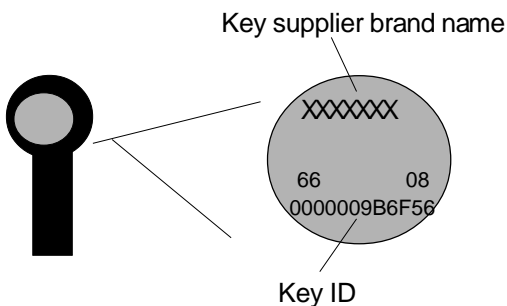


Button Reader



Key

Picture 1-1: Outward of Reader and Key



Picture 1-2 : Key ID. Each key contains uniq ID

2 Specification

i Button Reader

I/O Ports

- One phone jack
- One gutter for key set.

Indicator

- A green LED will turn on when powered on; red to indicate the operation status and error status for trouble shooting

Mechanical

- Dimension for diameter: 12.65CM
- Dimension for height : 2.5CM
- Weight : 800g

Environment

- Operating temperature : 0°C - 40°C
- Storage temperature : -20°C - 60°C
- Humidity : 10% - 90% RH (non-condensing)

Cable

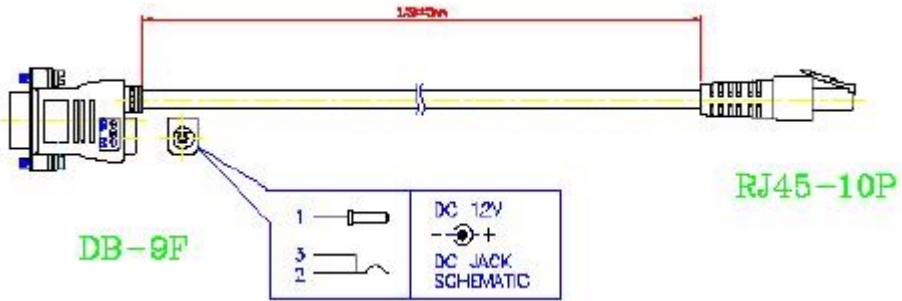
- One for RS232 output with 12V DC jack(see picture 2-1)
- One for Y-cable Keyboard output(see picture 2-2)

Key

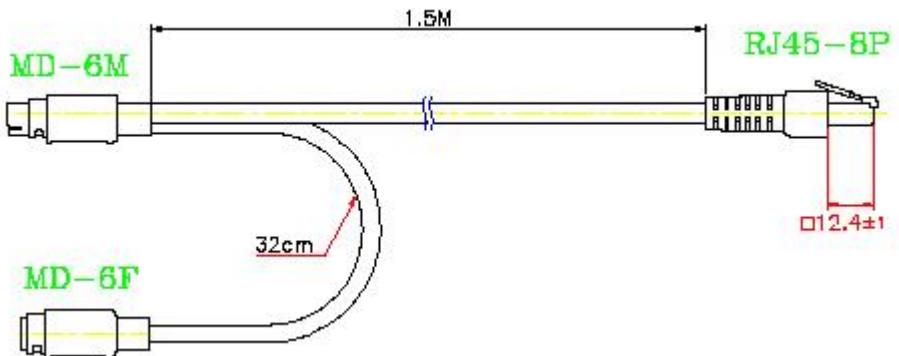
Dimension

- Dimension for diameter: 2.5CM
- Dimension for height : 0.6CM

Cables



Picture 2-1 RS232 output



Picture 2-2 Keyboard output

3 Utility

The utility helps user to define parameters of communicates interface. The utility also includes each mode test window (RS232 and Keyboard interface), which helps customer easily to define configuration of data-reading. Check hardware condition as following before you start to use the utility.

Step1 Check Connection:

1. With RS232 Interface

Connect RJ-45 male cable to button reader, connect the other end with DB9 male cable to COM port.

2. With Keyboard Interface

Connect RJ-45 male cable to button reader, connect the other end with Y- type keyboard to PC and QWERTY keyboard.

NOTE: JB-1300 can only program with RS232 communication.

Setp2 Power ON

The green LED on the reader will turn on. Then, touch key to the reader with JB-1300 utility, the orange LED will be turned on while data reading.

Setp3 Install JB-1300 utility to your HDD

Run "setup.exe" from installation file, the utility will create a shortcut to the Windows "start menu", then execute "UT-JB1300VXX.exe" of the folder.

NOTE: "VXX" of exeuting file "UT-JB1300VXX.exe" is type for version number. For example: V17 means version 1.7.

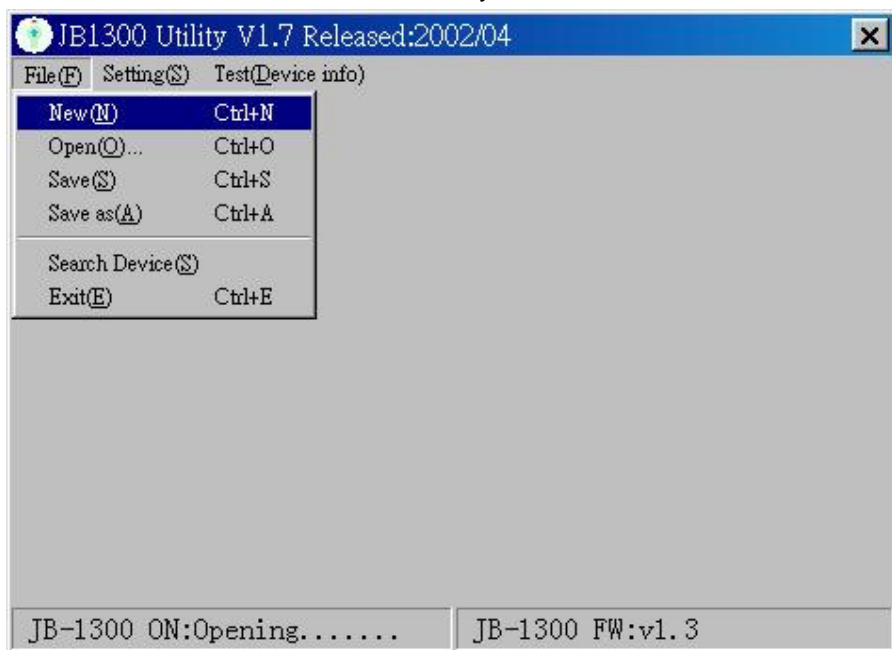
Setp4 Detecting JB-1300

Utility will detect COM port for search device(JB-1300).
User may start to define related setting, and test reader
after system detected JB-1300 of each COM port.

Setp5 Related setting with Page1 (See picture 3-1)

In this item,

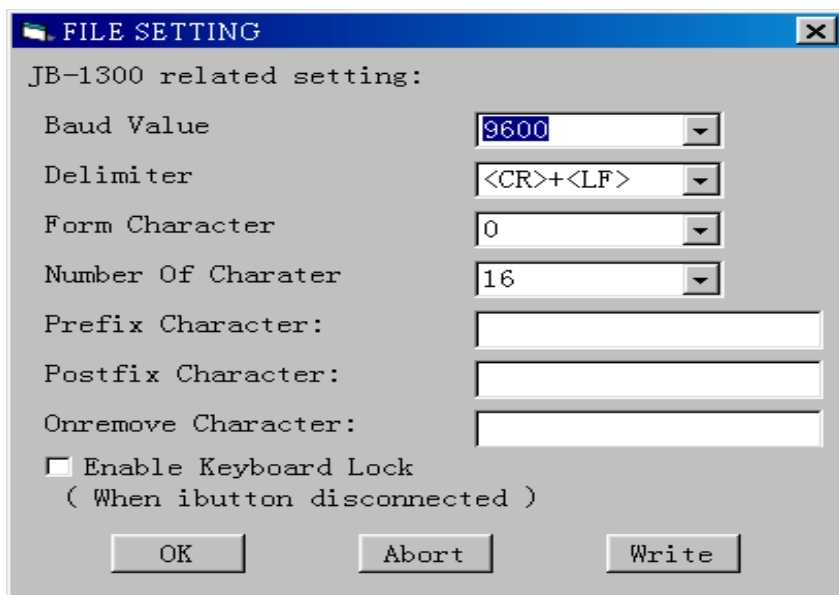
1. Press "New" to add new file with 1300 setting configuration file.
2. Press "Open" to execute a file that user already saved.
3. Press "Save" to save existing configuration.
4. Press "Save As" to save file with others file name.
5. Press "Search Device" to search COM port and connected device.
6. Press "Exit" to close this utility.



picture 3-1

Setp6 Related setting with Page2 (See picture 3-2)

- A. The sequence of data format in the ibuootn key(when the ibutton is key already in the gutter) is "[Prefix][ID code][Postfix][Delimit]". User may set them with following items.
- B. User will get the data every time when ibutton key left from gutter. The data sequence are: [On remove][Delimit]; User may set them with following items.
1. Select "baud Rate Value" from 300 to 115200bps. It can be choose from 300 bps to 115200 bps to set JB-1300 baud rate.
 2. Select "Delimiter" with <CR>+<LF> / <TAB> / <LF> / <CR>
 3. Select "Form Character" from 0 to 16 to define beginning character.
 4. Select" Number of Characters" from 0 to 16 to define how many characters customer desire to show.
 5. Fill characters in "Prefix Character" frame to define prefix. the limited size is 7-characters. the characters shows before ID.
 6. Fill characters in "Postfix Character" frame to define postfix. the limited size is 7-characters, the characters will shows on the end of ID.



picture 3-2

7. [On Remove]:
Fill characters limited by 7 in the frame to set identified data when ibutton key left the reader.
8. Enable Key Lock:
This function allows user to enable "keyboard lock" when the ibutton key isn't on the reader. The setting only uses with Keyboard mode.
9. Press [ok] to save setting, or press [Abort] to cancel. For writing data to JB-1300, then, press [Write].

Setp7 Related setting with Page3 (See picture 3-3 & 3-4)

With RS232 output mode test:

Connect RJ-45 male cable to button reader, connect the other end with DB9 male cable to COM port.

1. Select "Hex display" or "Ascii display"
2. After touch the key, key's data will shown in the bottom window
3. Press "Ext" to close the test window.



picture 3-3

With Keyboard output mode test:

Connect RJ-45 male cable to button reader, connect the other end with Y-type keyboard to PC and QWERTY keyboard.

1. After touch the key, key's data will shown in the bottom window
2. Press "Exit" to close the test window.



picture 3-4

A

Appendix I

Packing List

- | | |
|--|-------|
| • Main Unit (Button Reader) | 1 SET |
| • Keyboard Interface Cable | 1 PCS |
| • RS232 Interface Cable | 1 PCS |
| • Rubber Feet | 4 PCS |
| • CD title with one manual and one JB-1300 Utility | 1 PCS |



Copyright 2002

Jaritech International Inc.

Printed in Taiwan

Version 2.0

Jaritech International Inc.

Address: 3F, No. 1, Lane 538, Chung Cheng Road,
Hsin Tien, Taipei, Taiwan, R.O.C.

TEL: +886-2-22188082

FAX: +886-2-22188765

E-mail: sales@jaritech.com.tw

Web Site: www.jaritech.com.tw

SERVICE & QUALITY TO YOUR HEART